

# HUGO MARLA



3/23 Image: Modular in Copeland Honey

Impeccable quality and luxurious comfort can come together in one masterpiece, with 3 modular components and 1 seater sofa chair. The Hugo Marla has a deep seat, plush upholstery and retro air perfect for capturing attention.

UPHOLSTERY COLOUR	MATERIALS	LEG COLOUR
Copeland Honey	100% polyester	Natural
Copeland Olive	100% polyester	Natural
Ice Grey	100% polyester	Natural
Rust Speckle*	85% Polyester, 15% Acrylic	Natural

## DIMENSIONS

WIDTHS	Various
DEPTH	Various
SEAT HEIGHT	400mm
ARM HEIGHT	Various

**COVERS** Non-Removable

**PROFILE** Soft

Soft foam core with feather & fiber wrap

**FILLING**

**LEG MATERIAL** Solid Ash Wood

**JOINING BRACKETS** Included

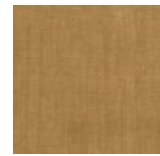
## COMPONENTS & CONFIGURATIONS

Please refer following page.

## NOTES

As product specifications sometimes change, please confirm with your GlobeWest salesperson before placing your order.

## CORE UPHOLSTERY COLOURS



Copeland Honey (CPLHON)



Rust Speckle\* (RST)



Copeland Olive (CPLOL)



Ice Grey (ICGY)

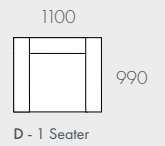
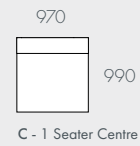
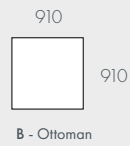
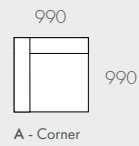
\* 1 Seater Sofa only

## CUSTOMISATION AVAILABLE

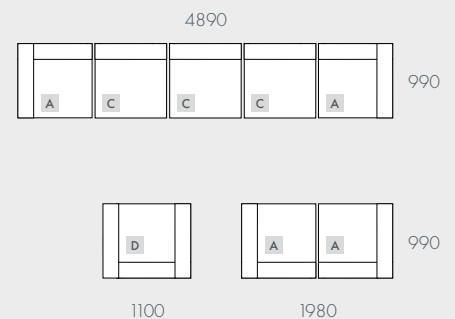
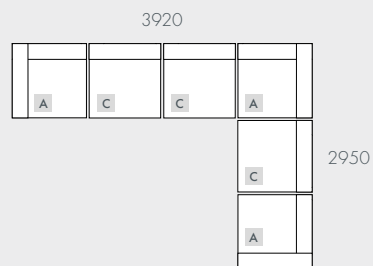
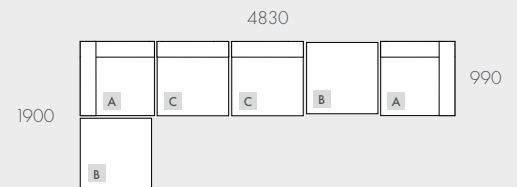
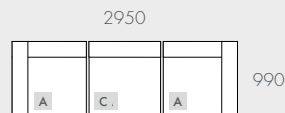
Visit a showroom to discover our thoughtfully curated palette of custom fabrics.

# HUGO MARLA

## COMPONENTS



## MODULAR EXAMPLES



All dimensions shown are millimetres.

KEY	DESCRIPTION	PRODUCT CODE	WIDTH	DEPTH	HEIGHT
A	Corner	SOF-HUGO-MAR-CNR	990	990	825
B	Ottoman	SOF-HUGO-MAR-OTT	910	910	400
C	1 Seater Centre	SOF-HUGO-MAR1S-CTR	970	990	825
D	1 Seater Sofa	SOF-HUGO-MAR1S	1100	990	825

## CONTACT US

To find out more information or place an order please contact us.

T. 1800 722 366

E. [enquiries@globewest.com.au](mailto:enquiries@globewest.com.au)

Showrooms: Melbourne, Sydney, Brisbane, Adelaide and Perth.